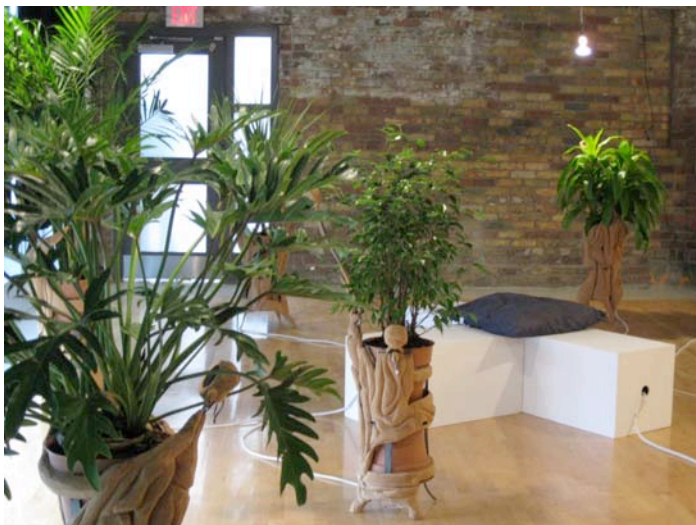


## TechRider – Plant(iPod)Installation



- Dimensions and weights: (W x L x H)
  - Wooden Box # 1: 30.5 x 37 x 24.5 - 70 lbs  
77 x 94 x 62 cm - 31.75 Kg
  - Wooden Box # 2: 34.5 x 35 x 20.5, 70 lbs  
87 x 88 x 52 cm, 31.75 Kg
  - Wooden Box # 3: 30.5 x 37 x 18.5 - 70 lbs  
77.5 x 94 x 47 cm, 31.75 Kg
- Installation needs:
  - The installation is adaptable to any shaped space. Space required: between 49 - 80 m<sup>2</sup> (500 - 900 ft<sup>2</sup>)
  - Power required: 1 15A 120V circuit; Type B outlets (flat blades with round grounding pin).
  - Power on the ceiling – to hang the individual grow lights.
- Furniture required:
  1. One comfortable bench, for lounging. Beneath this bench, I will store the motu and the sensor box. I can also store my shuttle computer if the bench is taller than 7.5" if not, one plinth to store the computer and a cabinet for the power bar and adaptors.

• Setup time: 1.5 days

<i>Item</i>	<i>QT</i>	<i>Description</i>	<i>Artist</i>	<i>Exhibit. Center</i>
1	8	Custom Sculptures	X	
2	1	Custom interface	X	
3	1	Shuttle computer s/n:SS30G20000635D000142	X	X screen/mouse /keyboard
4	1	Screen – s/n: HA17H9NLA29379K	X	
5	1	Motu lightweight – s/n:UL00005724		
6	8	House Plants (Home Depot - \$300.00)		X
7	1	Bench		X
8	1	Regulated Power Supply s/n:DPS-1012M	X	

## Installation Instructions –Plant(iPod)

---

- 1) Assemble objects. All 8 objects are labeled with a number – 1 through 8. If the sculptures are in parts - each component – ie/ base, speaker arm, and body of the object is labeled. Attach all of the bases to the body of the corresponding sculptures with screws.

Note: The number of each object corresponds to the numbers in the patch.  
So – Object 1 = Tree 1

- 2) Object placement. Each object has 2 sensors. It is important that the objects are placed in such a way that the whole space is sensed

Note: Each object is numbered 1 – 8. Each sensor has a number as well. It is important to know which is sensor 1 – so each sensor 1 is marked with a black line/dot. In the patch the sensors are numbered sequentially.

Object 1 = Tree 1

Sensor 1 = r m1

Sensor 2 = r m2

Object 2 = Tree 2

Sensor 1 = r m3

Sensor 2 = r m4

Object 3 = Tree 3

Sensor 1 = r m5

Sensor 2 = r m6

Object 4 = Tree 4

Sensor 1 = r m7

Sensor 2 = r m8

Object 5 = Tree 5

Sensor 1 = r m9

Sensor 2 = r m10

Object 6 = Tree 6

Sensor 1 = r m11

Sensor 2 = r m12

Object 7 = Tree 7

Sensor 1 = r m13

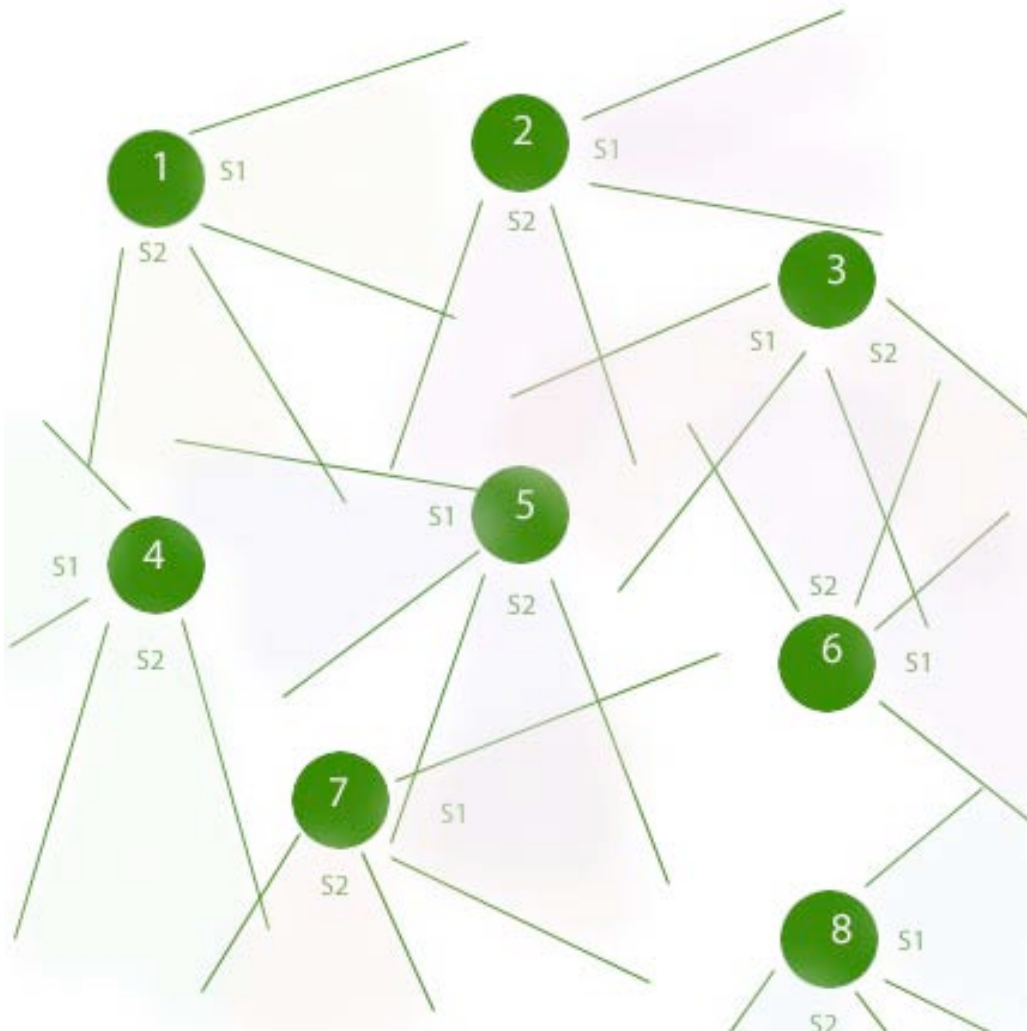
Sensor 2 = r m14

Object 8 = Tree 8

Sensor 1 = r m15

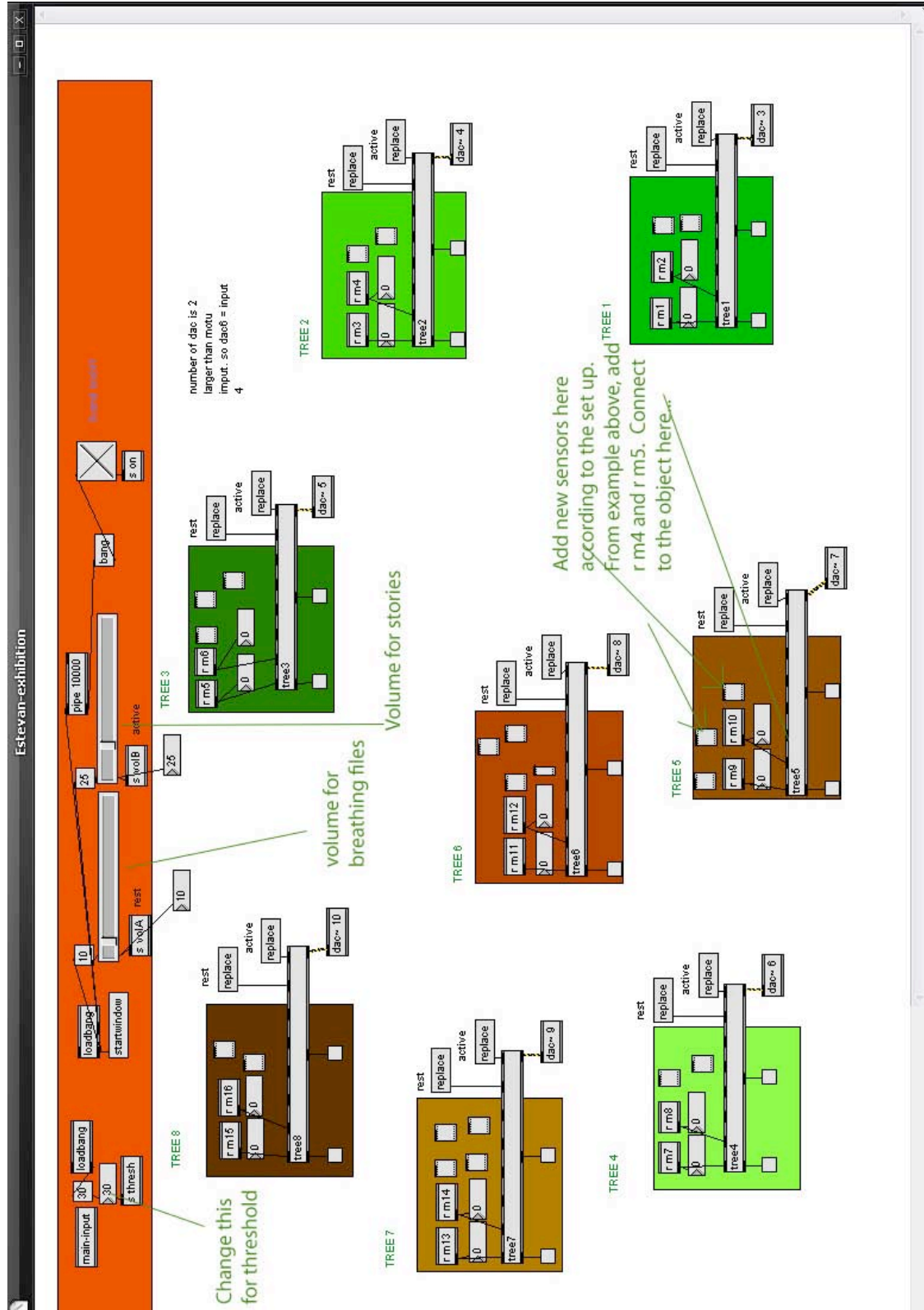
Sensor 2 = r m6

- 3) Sensors help sense what is happening around each object. So once the objects are placed, you must add sensors to the tree objects in the patch. For example below – Object 2 is also sensed by S1 from Object 1, and Object 5 is sensed by S2 of Object 2 and S1 of Object 3. These must be added to the patch.

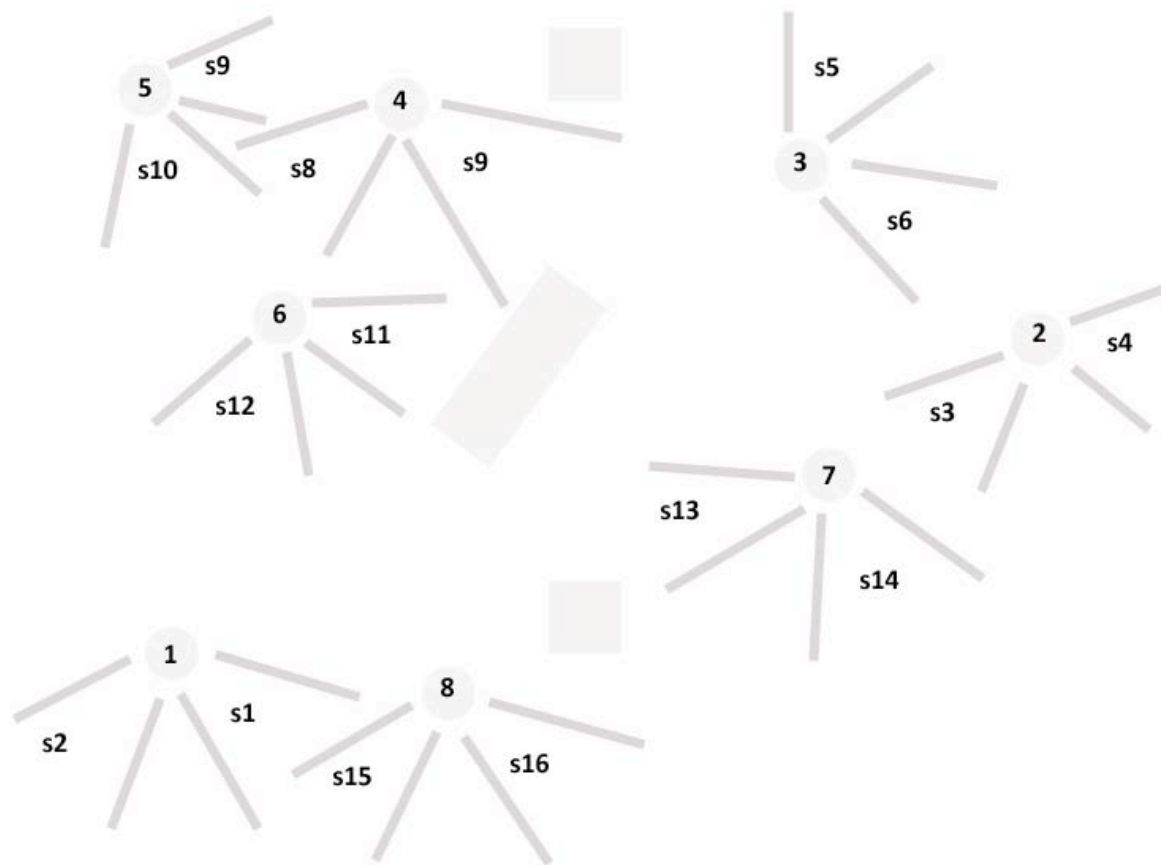


- 4) The threshold must be set. When people are close to objects, the sensor readings go high – choose a number that suits the exhibition space. If the exhibition is space is small, then the number must be set higher. If not, the objects themselves will trigger the change in sound.
- 5) Wrap all of the wires so they are covered in the white wire covering.
- 6) Volume – you can control the volume in two ways. Individually - Inside the objects there is a volume control. Over all – In the patch you have a slider which controls the volume of all of the plants.
- 7) Plant the individual plants – water and spritz with water.

8) Hang the individual grow lights above each plant from the ceiling.



## Beijing Installation



## Maintenance Instructions –Plant(iPod)

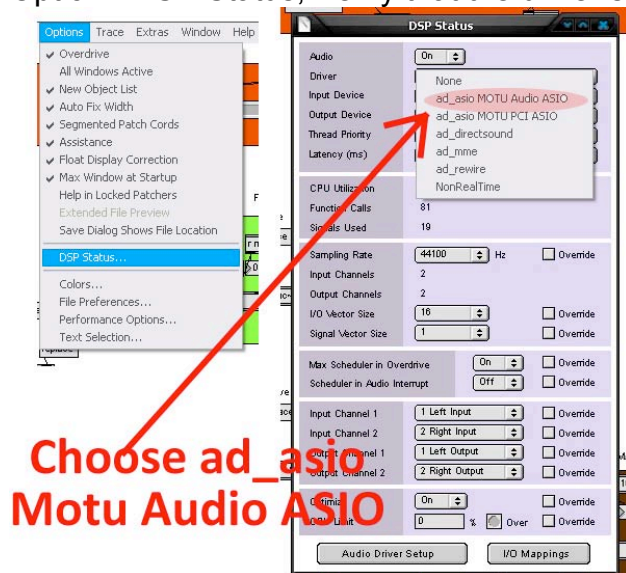
- 1) Every morning turn on the grow lights and spritz the plants.
- 2) Turn on computer. Turn on the motu. Turn on the power supply – verify that it is set at 9vdc. Turn on the sensor box. Wait until the computer is on fully – **wait 5 minutes**.
- 3) Open patch labeled Beijing-Exhibition.pat. (star icon) The patch will turn on automatically.

Note 1 – If the voices are really loud when you load the patch it is because you didn't give the computer adequate time to load. Be sure to wait for 5 minutes from starting the computer before loading the patch

Note 2 – If the voices are playing for no reason restart the sensor box. When you do this turn off patch (click the X to turn off) and then stop sensor box for 15 seconds – restart sensor box, and then turn the patch back on.

Note 3 – if for some reason the breathing files don't start – and all you hear are the stories rather than the breathing files - restart the patch.

Note 4 – If there is no sound at all – in patch go to  
Option> DSP Status, Verify that the driver selection is ASIO Motu Audio.



- 4) At the end of every day - shut down computer, sensor box, power supply, and spritz the plants with water.
- 5) Water the plants once every week. Be careful not to spill the water.

\*\*\*\* There is a fuse in the sensor box – extra fuses are taped to the sensor box.  
You know the fuse has been blown if the green light on the sensor box is not on.

## De-Installation Instructions –Plant(iPod)

---

- 1) Depot every plant – transfer plant back to the original pots (pots are marked with a corresponding number). Put the white pot back in the individual sculpture and place one well-wrapped light bulb, and one cord for the light bulb.
- 2) Unplug all objects and roll up and tie cords. The cords are connected to the pot. Just bundle the cord and store in the pot with the light bulb and ceiling cord. Wrap each object in bubble wrap.
- 3) Remove bases from objects 1, 4, 7, and 8
- 4) Remove arms from objects as needed when packing.
- 5) Individually wrap the computer, keyboard, mouse, screen, motu, power supply, and sensor box. **Do not forget the cables.**
  - 1- Serial cable, Fire wire 400 to 400, White power cable from power supply to box, Power cords (x2), and VGA to VGA

### NOTES

- Use extra bubble wrap to protect objects in the box.
- Be careful when packing the computer. It goes in Box 3 – it is wrapped and placed on the pot of object 5.
- Make sure the power supply is placed in the bottom of the box 1 – it is very heavy and will damage the objects if not.



## 6) Packing Instructions for Plant iPod Installation

**Each box contains a light bulb per object and a lighting cable/socket per light bulb**

**Wooden Box # 1:** 30.5 x 37 x 24.5 - 70 lbs  
77 x 94 x 62 cm - 31.75 Kg

Contains: 2 medium and 1 small

- Objects # 3.7.8
- Base # 7,8
- Arm 5, 3, 7, 8
- sensor Interface
- Motu – w firewire and serial
- Power supply (with cord)
- Black bag #1
- tool kit and soldering iron (in small black bag)
- Screen

**Wooden Box # 2:** 34.5 x 35 x 20.5, 70 lbs  
87 x 88 x 52 cm, 31.75 Kg

Contains: 2 medium and 1 small

- Objects # 2.4.6 with arms  
(Object 6 is packed upside down or sideways)
- Base 4
- Black bag #2

**Wooden Box # 3:** 30.5 x 37 x 18.5 - 70 lbs  
77.5 x 94 x 47 cm, 31.75 Kg

Contains: 1 medium and 1 large

- Objects # 1, 5
- Base #1
- Shuttle body and cables
- keyboard and mouse



---

### Black Bag 1

- Wire wrap
- Extra cork

### Small black bag

- Tool kit

### Black Bag 2 - Replacement parts

- Extra subs and 2 extra tweeters
- little boards and extra sensors
- extra cables
- Installation hardware (ie screws)
- Tool kit (in Small black bag)



## Tech needed

Shuttle – Keyboard - mouse  
Sensor Interface  
Motu  
Power Supply  
Light bulbs  
8 objects

## Cables needed

- 1- Serial cable
- 2- Fire wire 400 to 400
- 3- White power cable from power supply to box
- 4- Power cords
- 5- VGA to VGA
- 6- Ceiling light cables

\*\*\*\*\*

**IN ALL pots – put 1 well packed lightbulb, 1 cable for lightbulb, and the cables for the iPod**

## List of objects

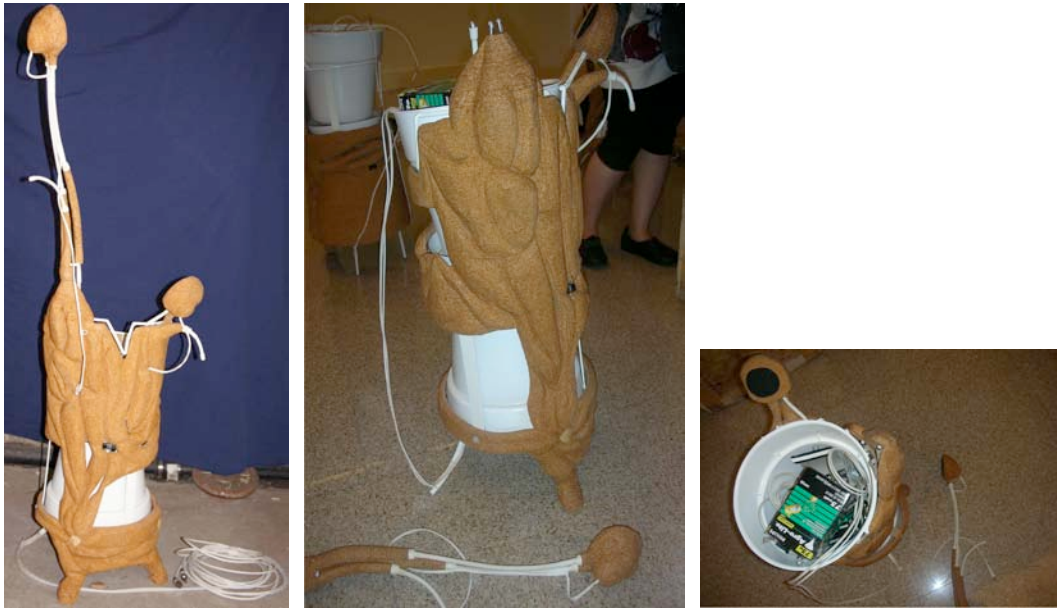
---

### OBJECT 1



Remove one arm, remove base, wrap everything individually in bubble wrap.

OBJECT 2



Take off large arm, do NOT remove base, wrap everything individually.

OBJECT 3



Take off arms, do NOT remove base, wrap everything individually.

OBJECT 4



Take off arms, remove base, wrap everything individually.

OBJECT 5



Take off arm, remove base, wrap everything individually.

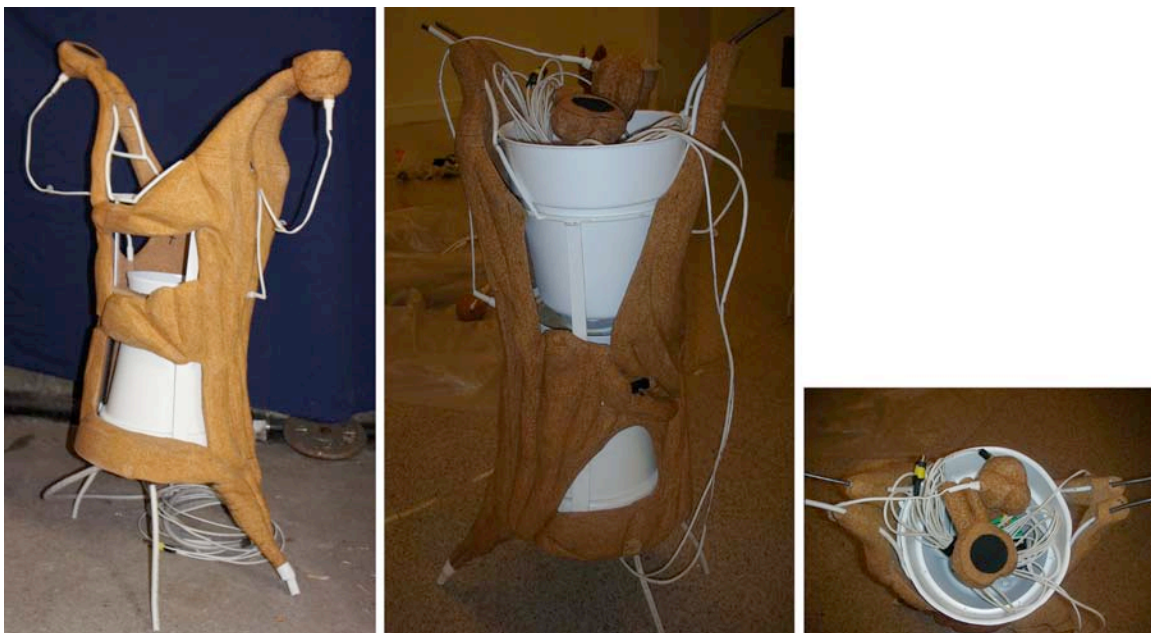


OBJECT 6



Take off arms, do NOT remove base, wrap everything individually.

OBJECT 7



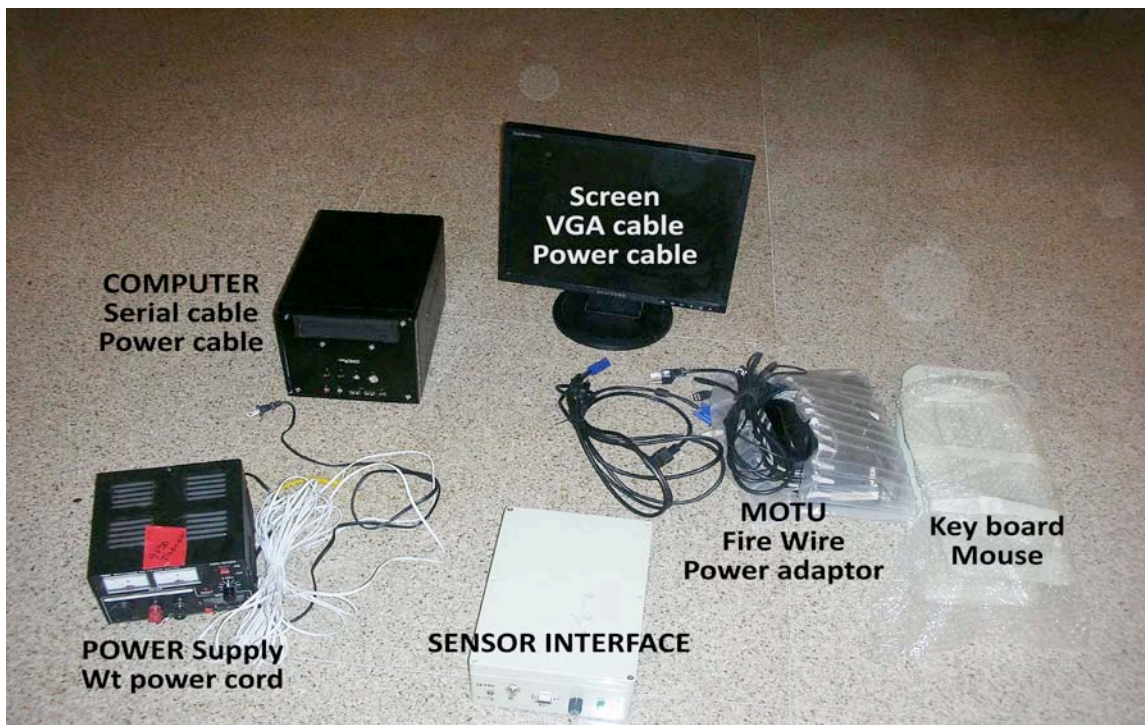
Take off arm, remove base, wrap everything individually.

OBJECT 8



Take off arm, remove base, wrap everything individually.

Technology – do NOT forget CABLES



**Black Bag 1 and 2 are in the boxes**



Pack the computer screen in the Styrofoam provided. It sits on the top of everything in box # 1



